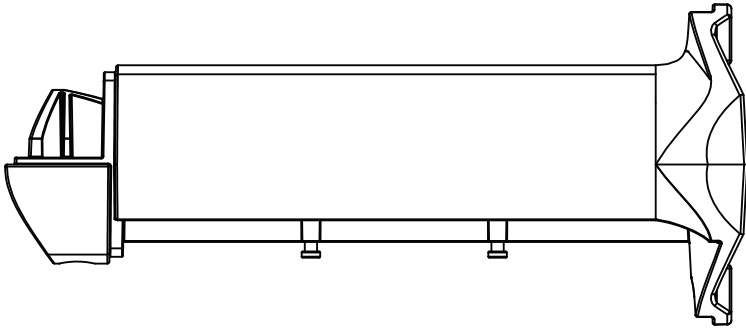
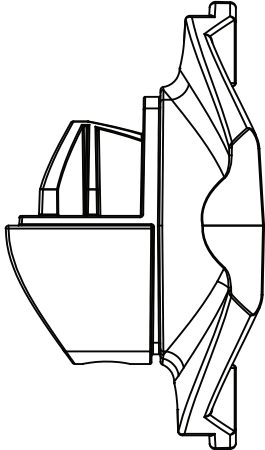


ENS Group **MM-10-203 & MM-10-204** Instructions
PARTS INCLUDED

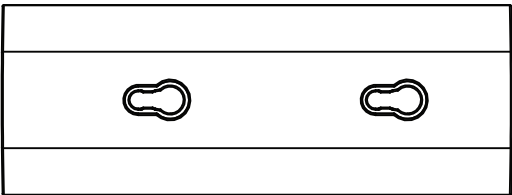


Channel Arm
MM-10-204

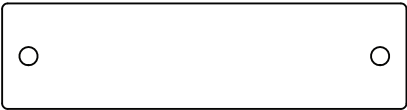
OR



Channel Mount
MM-10-203



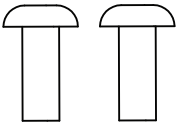
Arm Cable Cover



Channel Clamping Plate



2.5 mm Hex Wrench

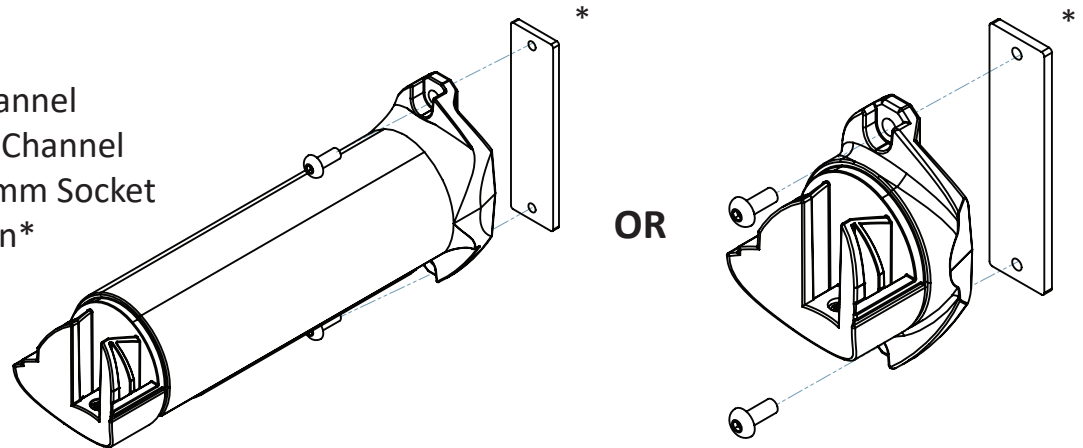


2x M4 x 10mm
Socket Head Screws

ENS Group MM-10-203 & MM-10-204 CHANNEL MOUNT INSTALLATION

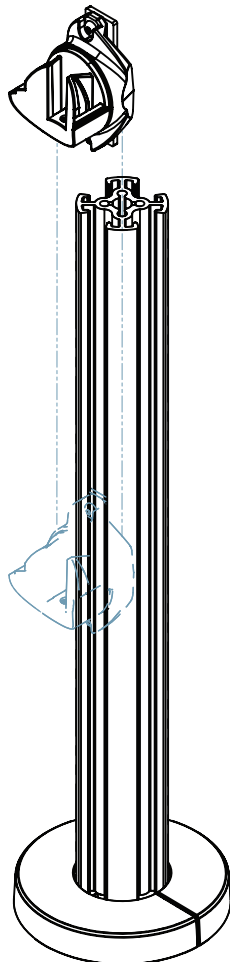
Tool Required:
2.5mm Hex Wrench (Provided)

Step 1: Loosely attach the Channel Clamping Plate to the Channel Mount using M4 x 10mm Socket Head Screws as shown*



*Note: Install lower device mounts on the same side of pole first. To add a lower Channel Mount or Arm on an adjacent side of the pole, slide the Clamping Plate into the Pole Channel first and then attach the channel Mount or Arm

Step 2: Attach lowest Channel Mounts first



Step 3: Channel Arm only

